

Course
Senior Project: Capstone II

Process
Design
Ecology
Ethics
Sustainability

Student
Alessandra Ferretti

Pulosi

A new approach to sustainable design, for dog by dogs.

Project

Pulosi is a non-profit organization that intends to re-design dog parks in New York City to provide a more organic experience for dogs, allowing them to connect with nature while still having dedicated quarters that allow them to lead the life that they were meant to. The concept stems from research into the numerous health risks that current dog parks may present to dogs (e.g., corneal abrasions). This will be accomplished by putting sustainable and social design ideas into action to shape our future.

Challenge

The primary focus for dog park designs is “ease of maintenance” rather than a dogs health and well-being. Dogs lack the opportunity to determine whether they live in the suburbs or in an enclosed apartment. As humans, we have the ability to provide them with an effective substitute by ensuring tailored quarters that target their requirements. There are currently 600,000 dogs in NYC, and the city is only going to become denser. Dog parks are a perennial issue, and the demand for them will only continue to grow. At Pulosi, our designs focus primarily on the benefit of a dogs, as well as our designs to be sustainably led, which additionally, delivers a significant economic benefit to the city.

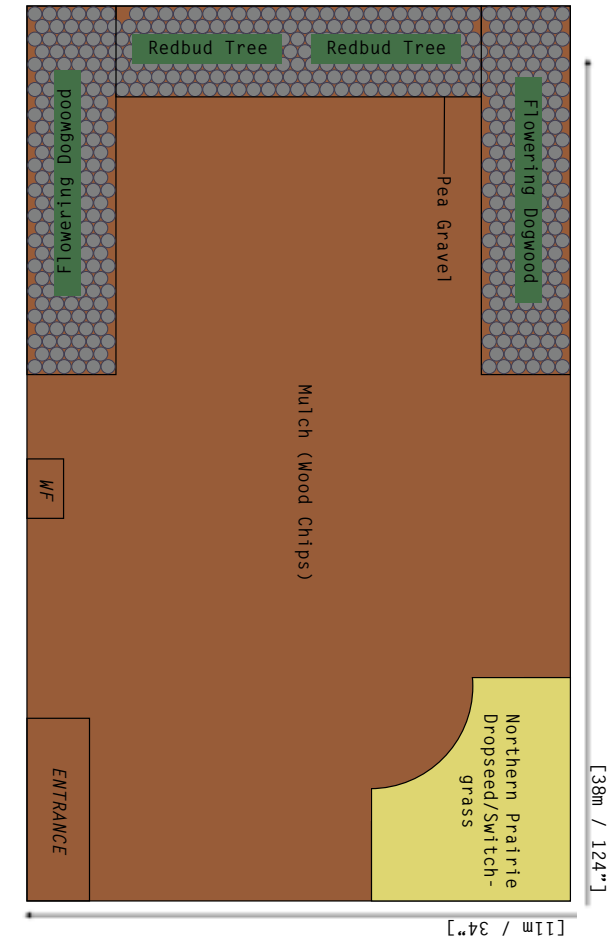


Outcome

The project involved extensive research and analysis of the city's current dog parks, with the goal of determining how we could improve them sustainably while ensuring that they were created specifically for dogs and their requirements. A 3D representation was created to illustrate how the parks would look. The project showed numerous beneficial financial outcomes, demonstrating how the new redesigned parks would cost the city less economically and allow it to benefit more sustainably, in more ways than one. Most importantly, it represented ways for dogs to thrive on their outings by supplying them with specialized play sets that provide them with all they require, from nature to space.

Diagram #4

Pulosi

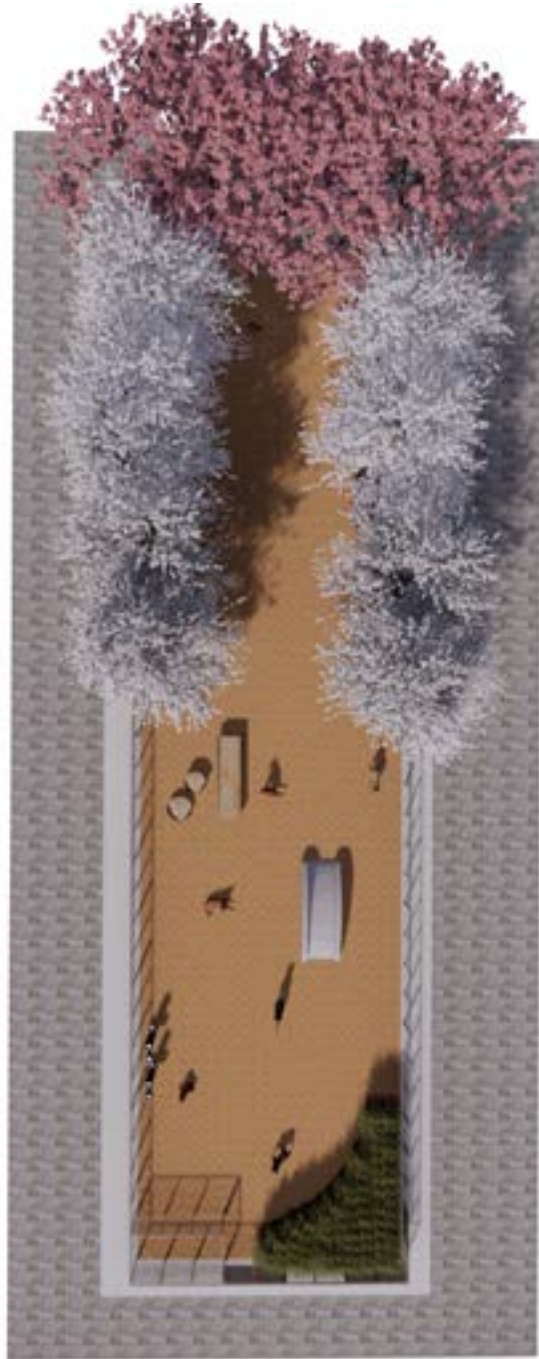


Right

Final diagram/sketch of re-designed dog park, based on average size.

Left

Pulosi logo.



The following images represent the 3D render for the re-designed dog park, utilizing the design perspectives and tools at Pulosi. The design focuses primarily on the benefit of a dogs health, and finding alternatives to what would ideally be, forests and natural life. Nevertheless, our second primary focus is to also be sustainable and bring a small percentage of positive impact into the NYC ecosystem, by focusing on implementing the regions native plants into the design of the park.



Dog parks are a perennial issue, and the demand for them will only continue to grow.

Pulosi is targeting to re-design dog parks in order to create a more naturalistic experience for dogs to enjoy within NYC, giving them a chance to connect with nature and be able to have a designated quarters to live the life that they are supposed to.

This will be completed by taking the sustainable and social design principles into its our hands, to create what will be our future.